

# Series 9010

Communicates with basic set point temperature or carbon controllers enhancing your capabilities by running simple or complex heat treat recipes without replacing existing instrumentation



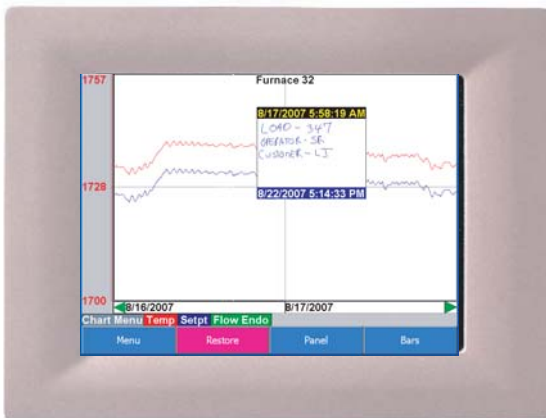
## Enhanced Set Point Programmer and Digital Chart Recorder

### Model eSPP Includes

- Alarm log with e-mail capabilities
- Easy to use recipe programmer
- Universal MODBUS communications
- Configurable event management
- Digital data recorder
- Turn simple PID controls into programmable controls
- Optional batch database for load tracking

- Digital data recording / data logging / trend display
- Add hand written or typed notes to trend charts
- 5.7" color touch screen, operator interface (cutout: 7.40" W X 5.56" H)
- Optional color touch screen sizes include 12.1
- ETHERNET - Modbus TCP, RS 232, RS485 (2) ports for SCADA interface
- Easily integrated into existing SCADA platform
- Universal recipe programmer
- Multi-Language display
- Software drivers include: SSi, Honeywell, Eurotherm, Yokogawa, and MSI atmosphere and temperature controllers
- Setup for any Modbus communicating instrumentation
- Stores 300 heat treat recipes
- Easy editing of set point, soak times, and events
- Utility software for remote configuration of recipes and datalog reporting
- Applications include: batch, belt and pusher, pit, vacuum and temper furnaces
- 8 User defined events

Examples include: • Alarms • Probe Burnoff • Ammonia  
• End of Cycle • Force Cool



Built in Chart Recorder with Notes

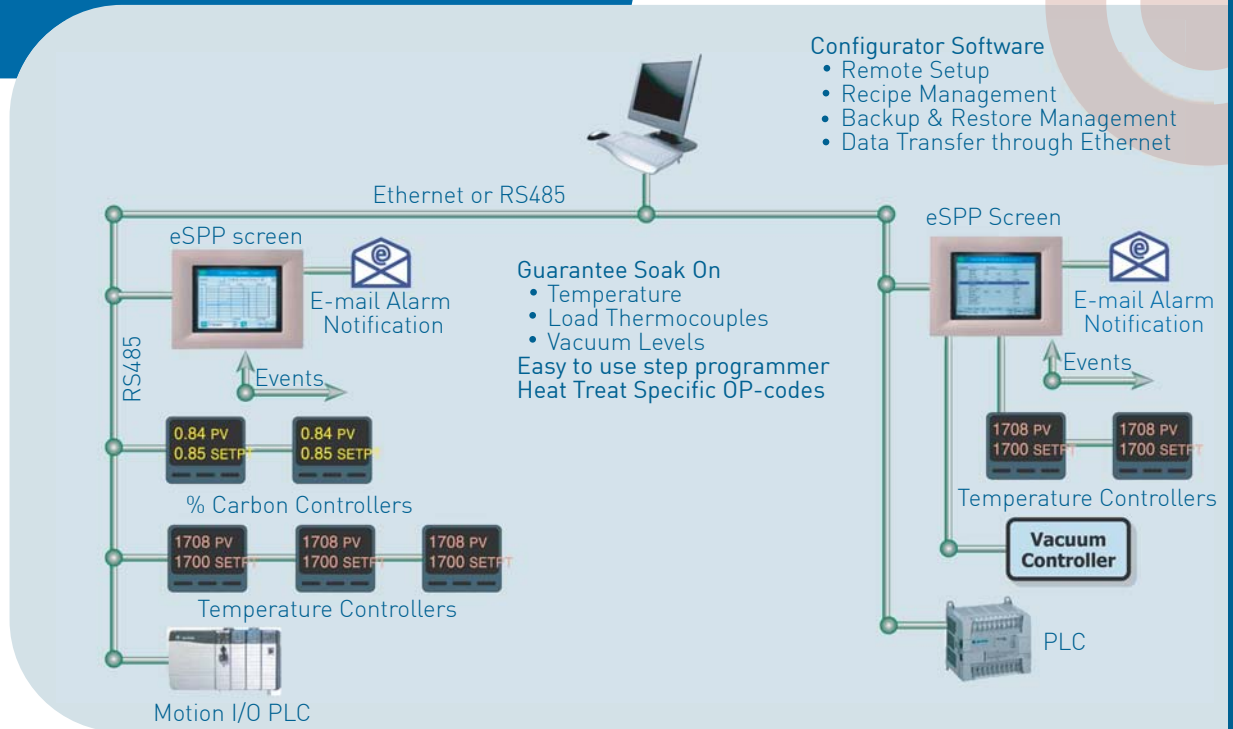


INNOVATIVE SOLUTIONS WORLDWIDE



Super **Systems** incorporated

# Control Network



- Configurator Software
- Remote Setup
  - Recipe Management
  - Backup & Restore Management
  - Data Transfer through Ethernet



## Recipe Programmer

Typical "Program Status" Screen

- program number running
- showing full program
- step number and segment type
- atmosphere and temperature set points
- event status
- special instructions
- current segment running
- time remaining
- time in segment
- total program time

Actual trend chart print-out showing temperature and atmosphere set points, process variables and hand written or typed notes.

Data retrieved through flash card or data management software using Ethernet.

Non-volatile flash memory data storage



**Super Systems**  
incorporated

7205 Edington Drive  
Cincinnati, OH 45249  
513.772.0060 phone  
513.772.9466 fax

