



Series 9205

Three loop temperature and atmosphere programmable controller engineered for furnace applications

Programmable Atmosphere and Temperature Controller



- Universal recipe programmer
- Easy editing of setpoint, soak times and events
- Ethernet - Modbus TCP, RTU, RS232, RS485 Port
- Stores 300 24-step recipes
- AMS 2750 E compliant
- Advanced auto tuning, with 3 loops of control
- IQ furnace quench transfer time configurable alarm
- Utility software for remote configuration of recipes and data log reporting
- Loops configurable for furnace temperature, quench temperature and % carbon
- Events: end of soak, ammonia addition, and probe maintenance
- Video recorder - Data storage
- Allen Bradley DF1 comms for PLC integration
- MGA6010 3-gas analyzer compatible
- Configurable functions
- Maintenance tracking and alerts



Configuration Software & Data Management

- TS Manager - Data management for touch screen flashcard
- Remote data viewer, historical data backup, SuperDATA integration
- Configurator - Remote setup and configuration of controller

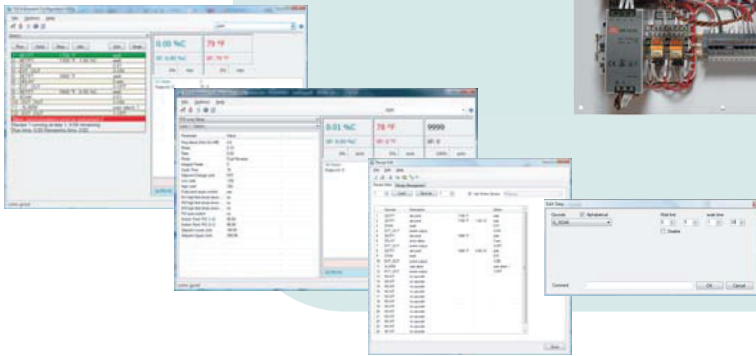
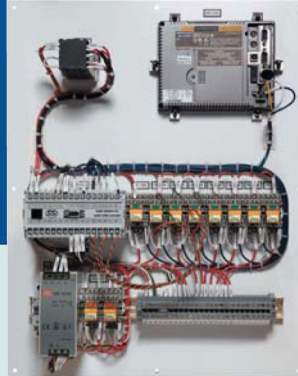


Mini Batch

- Load tracking in controller
- Load history
- Remote software



Atmosphere Control



Unique Features

- 16 PIDs via program opcode
- 3 PID sets per loop with defined temperature switch point
- T/C comparison with offset available for T/C checks
- Multiple alarms assigned to individual relays or a single relay
- Probe burnout and impedance test
- "0.00" set point deactivates control output
- Band limits for each process variable
- Guarantee soak timer based on auxiliary load thermocouples
- Remote set point for third input
- Cascade control
- Custom analog input correction curves used for certified wire correction or known offsets through input range. Can be used on auxiliary inputs (load TCs) or control inputs.
- ETL approved
- CE Marked



Model 9205 Features

Control Loops	Three loop PID controller Temperature and Carbon Potential Temperature and Dew Point Millivolt
Analog Inputs	Three
Analog Outputs	Two (0-20mA or 4-20mA), Analog outputs module for 4 additional outputs using SSi QuadDAC module PN 31548
Digital Inputs	Four
Digital Outputs	Eight relay outputs - Expandable to 16 with event module (P/N 13411)
Communication Ports	2 - RS232, 3 - RS485, ETHERNET
Display	12", 5.7" & 3.5" color touch screen Video recorder with "NOTES" Removable storage media PC interface with SuperDATA
Programmable Events	300 24-step recipes User defined
Web Browser Enabled	Remote PC view - standard browser
Mounting	DIN rail or sub-panel mounting
Power	24VDC (SSi part number 31135 - 90VAC to 230VAC input)



SuperSystems
incorporated

7205 Edington Drive
Cincinnati, OH 45249
513.772.0060 **phone**
513.772.9466 **fax**

www.supersystems.com • 800.666.4330