

Series 9220

state of the art multi-loop PID controller, engineered specifically with a focus on vacuum furnace applications

Vacuum Furnace Controller

Series 9220 includes

- Programmable controller (300 24-step programs)
- Expandable load T/C support
- Direct connection to vacuum gauges
- Interfaces with most vacuum controllers
- "Outgas" alarm
- Load T/C alarms
- Recipe driven
- Guarantee on load and control T/C's
- Multiple auto-switching PID's
- Video Recorder

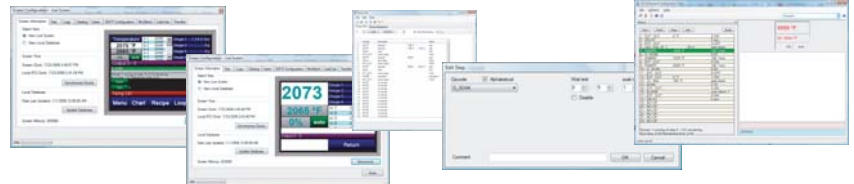


Built in Chart Recorder with Note

Unique features

- 16 PIDs via program "opcode"
- Band limits for each process variable
- Guarantee soak timer based on auxiliary load T/C's (Work/Part T/C)
- Extended I/O via PLC
- User selected PID settings for optimal control
- Overshoot suppression logic
- 3 PID sets per loop used with defined temperature switch point
- Ability to guarantee soak times on vacuum level
- User defined process variable curves for non-standard inputs
- Manage I/O through pre-defined vacuum or temperature set points

Software Configuration/Remote Management

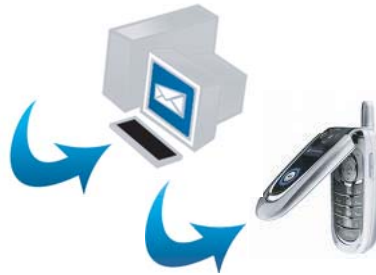


Super Systems
incorporated



Available Screen Sizes:
3.5", 5.7", 12.1"

E-mail Alarm Notification



- Alarm log with e-mail capabilities
- Easy to use recipe programmer
- Universal MODBUS communications
- Configurable event management
- Digital data recorder
- Optional batch database for load tracking

Mini Batch



- Load tracking in the controller
- Load history reports
- Remote software

INNOVATIVE SOLUTIONS WORLDWIDE

Vacuum Control Solutions



Model 5000 shown above
with optional Televac MM200



SuperSystems
incorporated

7205 Edington Drive
Cincinnati, OH 45249
513.772.0060 phone
513.772.9466 fax

Used to run complex vacuum processes with a user-friendly operator interface

Model 9220 Features

Control Loops	Temperature and Vacuum (3 Loops)
Analog Inputs	Three
Analog Outputs	Two (0-20mA or 4-20mA)
Digital Inputs	Four
Digital Outputs	Eight configurable relay outputs
Communication Ports	One - RS232 Three - RS485 ETHERNET
Display	5.25" Color touch screen Video recorder with "NOTES" Removable storage media PC interface with SuperDATA
Programmable	300 24-step recipes Vacuum specific "opcodes"
Events	User defined
Web Browser Enabled	Remote PC view (standard browser)
Mounting	DIN rail or sub-panel mounting
Power	24VDC (SSi # 31135)

www.supersystems.com 800.666.4330